



MODERN HAIR COLLECTION

spring/summer 2017

GISELA
MAYER



Die Gisela Mayer-Collection wurde von Gisela Mayer in den 60er-Jahren gegründet. Ihr Sohn Ingo Mayer begleitet das Designteam seit vielen Jahren. Die Philosophie von Gisela Mayer: innovative Perücken mit internationalen Color-Trends und aktuellen, modernen Schnitten.

Das gesamte Sortiment wurde in Hightech-Verfahren auf höchstem Niveau kreiert. Genießen Sie das Leben mit den neuen Cuts der Modern Hair Collection von Gisela Mayer – einer Wohlfühl-Kollektion der Meisterklasse.

Gisela Mayer Collection was founded by Gisela Mayer in the Sixties. Her son Ingo Mayer has been a champion for the Design Team for many years. Gisela Mayer's philosophy: cutting-edge wigs showcasing international color trends and contemporary modern cuts.

The product line was created in a hightech procedure at highest standards. Enjoy life with the assortment of new cuts of Gisela Mayer's Modern Hair Collection – the champions of feel-good.

La Collection GISELA MAYER – fondée dans les années 60 par Gisela Mayer, est encadrée depuis plusieurs années par son fils Ingo Mayer avec l'aide d'une équipe d'experts. Notre philosophie est toujours la même à savoir, développer la plus innovante des collections avec la plus haute exigence pour nos clients. Des chevelures de remplacements des plus naturelles grâce à des transformations haute technologie et à des coloris à la pointe des tendances internationales. Toute notre gamme de produits a été créée selon des procédés hightech pour avoir un niveau de qualité inégalé. Profitez de la vie avec les nouvelles coupes de Gisela Mayer Hair Collection – une collection placée sous le signe du bien-être et de la perfection.

La Gisela Mayer-Collection fondata da Gisela Mayer negli anni 60, viene accompagnata da tanti anni nel settore della progettazione dal figlio Ingo Mayer. La filosofia di Gisela Mayer: parrucche innovativi con le tendenze internazionali Color-Trends e tagli attuali. Il nostro assortimento creato al massimo livello, grazie allavorazione High Tech. Godetevi la vita con Cuts - Modern Hair Collection da Gisela Mayer - una collezione di benessere.

La colección Gisela Mayer fue fundada en los años 60. Su hijo Ingo Mayer dirige el equipo de diseño desde hace muchos años. La filosofía de Gisela Mayer es: "Pelucas innovadoras con colores-tendencias internacionales y cortes modernos".

Toda la gama contiene Tecnología Hightech y esta creada con el mas alto nivel. Disfrute de la vida con los nuevos cortes de la colección Modern Hair Collection de Gisela Mayer, una colección para sentirse bien de los mejores maestros.

Коллекция Gisela Mayer – основана Госпожой Гизелой Майер в 60-х годах в Германии и на протяжении многих лет поддерживается её сыном Инго Майером и командой дизайнеров. Философия нашей фирмы: это инновативные парики с интернациональными Color-Трендами и актуальными, современными стрижками. Весь ассортимент был создан Hightech-Методом на высочайшем уровне. Наслаждайтесь жизнью с новыми причёсками коллекции Gisela Mayer Modern Hair – это коллекция мастерского класса, с которой Вы будете чувствовать себя прекрасно.

MODERN HAIR COLLECTION



Salon Style ***



- 
1B
black
- 
4/6
espresso mix
- 
12/8-8
caramel fudge
- 
20R/27+12
chardonnay rooted
- 
1001/28-14+14
prosecco rooted
- 
133-131V
flame aubergine
- 
1001-Pink
pink white
- 
1001Rooted
snow white rooted



Sky **



- 
4/6
espresso mix
- 
12/8-8
caramel fudge
- 
12/14/26+12
dark ash blond rooted
- 
14/26/24+12
light caramel rooted
- 
G23/10+12
honey toast rooted
- 
1001/22-20+14
ash blond rooted
- 
33/130/2
dark auburn mix
- 
N38
light brown grey mix
- 
101/20+12
smoky grey
- 
silver grey

133-131V
flame aubergine



American Salon **+SLF



1B
black



4/6
espresso mix



12/8-8
caramel fudge



N14B/22T+12
vanilla rooted



14/26/24+12
light caramel rooted



1001/22-20+14
ash blond rooted



133-131V
flame aubergine



1002F
new orange red



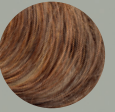
Express Light **



1B
black



4/6
espresso mix



12/8-8
caramel fudge



20R/27+12
chardonnay rooted



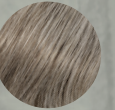
G23/20+12
honey toast rooted



33/130/2
dark auburn mix



133-131V
flame aubergine



119
smoky silver



101/20+12
smoky grey



305K
light brown grey mix



Cyber II ***



133-131V
flame aubergine



28/31/26
mango mix



1B
black



4/6
espresso mix



12/8-8
caramel fudge



20R/27+12
chardonary rooted



G23/20+12
honey toast rooted



1001/22-20+14
ash blond rooted



1001/28-14+14
prosecco rooted



1002F
new orange red



101/20+12
smoky grey



Fresh Light ***



133-131V
flame aubergine



101/20+12
smoky grey



1B
black



4/6
espresso mix



12/8-8
caramel fudge



20R/27+12
chardonary rooted



G23/20+12
honey toast rooted



23/20/27+14
ginger mix rooted



1001/22-20+14
ash blond rooted



28/31/26
mango mix

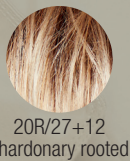


1001-pink
pink white

SIMPLY THE BEST!



Meral **



20R/27+12
chardonary rooted



133-131V
flame aubergine



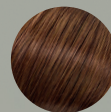
101/20-12
smoky grey



1B
black



4/6
espresso mix



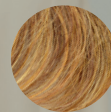
8/6/27
havana mix



12/8-8
caramel fudge



12/14/26+12
dark ash blond rooted



26/28/30+12
gold browntoast rooted



23/25+12
golden blond mix



1002F
new orange red



1001Rooted
snow white rooted



New Cool **+SLF



20R/27+12
chardonary rooted



1001/22-20+14
ash blond rooted



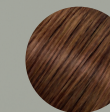
1002F
new orange red



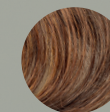
1B
black



4/6
espresso mix



8/6/27
havana mix



12/8-8
caramel fudge



12/14-12+12
vanilla rooted



14/26/24+12
light caramel rooted



G23/20+12
honey toast rooted



133-131V
flame aubergine



101/20+12
smoky grey



New Cool Mono Lace ****+LF



20R/27+12
chardonary rooted



1001/22-20+14
ash blond rooted



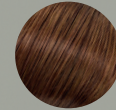
1002F
new orange red



1B
black



4/6
espresso mix



8/6/27
havanna mix



12/8-8
caramel fudge



12/14-12+12
vanilla rooted



14/26/24+12
light caramel rooted



G23/20+12
honey toast rooted



133-131V
flame aubergine



101/20+12
smoky grey



Point **



1B
black



4/6
espresso mix



12/8-8
caramel fudge



12/14-12+12
vanilla rooted



20R/27+12
chardonary rooted



G23/20+12
honey toast rooted



1001/22-20+14
ash blond rooted



133-131V
flame aubergine



101/20+12
smoky grey



1002F
new orange red

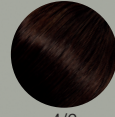
SIMPLY THE BEST!



Point Mono Lace ****+LF



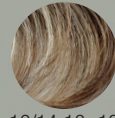
1B
black



4/6
espresso mix



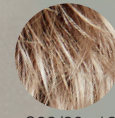
12/8-8
caramel fudge



12/14-12+12
vanilla rooted



20R/27+12
chardonnay rooted



G23/20+12
honey toast rooted



1001/22-20+14
ash blond rooted



133-131V
flame aubergine



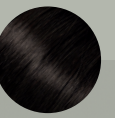
101/20+12
smoky grey



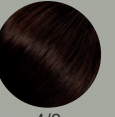
1002F
new orange red



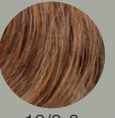
Romy ***



1B
black



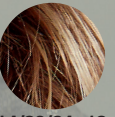
4/6
espresso mix



12/8-8
caramel fudge



12/14-12+12
vanilla rooted



14/26/24+12
light caramel rooted



16/23+12
champagne rooted



1001/22-20+14
ash blond rooted



23/1001
platinum blond



101/20+12
smoky grey



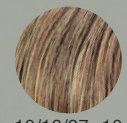
High End Tonia Long *****+LF



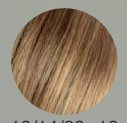
4/6
espresso mix



8/6/27
havana mix



10/16/27+10



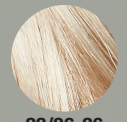
12/14/26+12
dark ash blond rooted



14/26/24+12
light caramel rooted



26/28/30+12
gold browntoast rooted



22/26-26
light gold blond



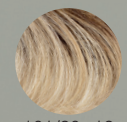
G23/20+12
honey toast rooted



1001/22-20+14
ash blond rooted



33/29/27+6
safran red rooted



101/20+12
smoky grey



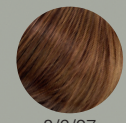
High End Vicky *****+LF



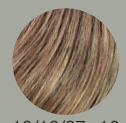
1B
black



4/6
espresso mix



8/6/27
havana mix



10/16/27+10



12/14/26+12
dark ash blond rooted



14/26/24+12
light caramel rooted



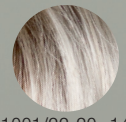
14/26+14



26/28/30+12
gold browntoast rooted



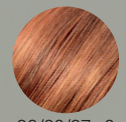
23/26+12



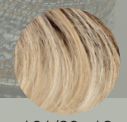
1001/22-20+14
ash blond rooted



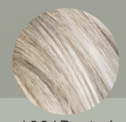
133-131V
flame aubergine



33/29/27+6
safran red rooted



101/20+12
smoky grey



1001Rooted
snow white rooted

SIMPLY THE BEST!



Tonia Long **+SLF



4/6
espresso mix



8/6/27
havanna mix



12/8-8
caramel fudge



12/14/26+12
dark ash blond rooted



22/26-26
light gold blond



G23/20+12
honey toast rooted



1001/28-14+14
prosecco rooted



101/20+12
smoky grey



Tonia Mono Lace Long ****+LF



4/6
espresso mix



8/6/27
havanna mix



12/8-8
caramel fudge



12/14/26+12
dark ash blond rooted



22/26-26
light gold blond



G23/20+12
honey toast rooted



1001/28-14+14
prosecco rooted



101/20+12
smoky grey



High End Celine ***+LF**



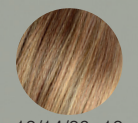
1B
black



4/6
espresso mix



8/6/27
havana mix



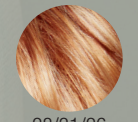
12/14/26+12
dark ash blond rooted



14/26/24+12
light caramel rooted



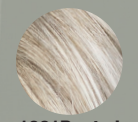
23/22+14
champagne rooted



28/31/26
mango mix

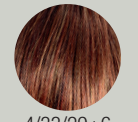


133/131V
flame aubergine

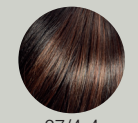


1001Rooted
snow white rooted

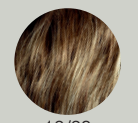
More Colors
ab/from
August 2017



4/33/29+6



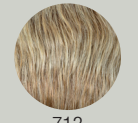
27/4-4



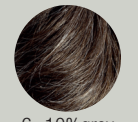
12/23



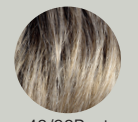
14/88+8



713



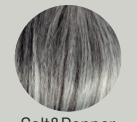
6+10%grey



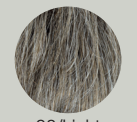
48/38Root



305+Root



Salt&Pepper



38/Light



51/60

+LF

Plus Filmansatz
Plus Lace Front / cinema
Plus film cinema transparent
Plus rete di teatro con tul
Plus tul frontal
плюс Монофиламент (имитация кожи головы)

+SLF

Plus kleiner Filmansatz
Plus small Lace Front / Cinema
Plus petit film cinema transparent
Con piccolo rete di teatro con tul
Plus pequeño tul frontal

*******+LF**

Volle Lace Front (ganzer Oberkopf) – 100% handgeknüpft
Full Lace Front (whole Top) – 100% handknotted
Plus cinéma / tulle frontal complet (sur tout le dessus de tête)
- 100% implanté main
Rete di teatro completa (intera sommità) - 100% lavorato a mano
Tul frontal completo - 100% picado a mano
ото лба до макушки Монофиламент - 100% ручное плетение

Mono – 100% handgeknüpft
Mono – 100% handknotted
Mono – 100% implanté main
Mono – 100% lavorato a mano
Mono – 100% picado a mano
Монофиламент - 100% ручное плетение

Mono – Tresse
Mono – Weft
Mono – Tressé
Mono – Tressitura
Mono – cosido
Монофиламент-тканые пряди

Tresse – Mono Wirbel o. Scheitel
Weft – Mono crown or part
Tressé – Mono epi ou mono raie
Tressitura – vortice Mono oppure con riga Mono
Cosido – Mono coronilla o raya
Тканые пряди-Монофиламент макушка или продель

Tresset
Weft
Tressé
Tressitura
Cosido
Тканые пряди



SIMPLY THE BEST !

GISELA MAYER GmbH
Litzelsdorfer Straße 3
D-87700 Memmingen
Tel.: (+49) 08331 - 954 00
Fax: (+49) 08331 - 9540 34
info@gisela-mayer.com
www.gisela-mayer.com

**GISELA
MAYER**
HAIR COLLECTION

